



# Tips tricks

Drill a 6 mm Clamex P access hole into the edge



Is the 6 mm access hole too noticeable or too inaccessible? Then drill the hole into the edge instead of the surface. This way you can fix fillers or covers invisibly while they still remaining detachable.

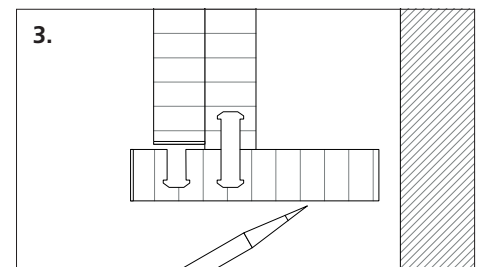
## How it works:



1. Cut P-System grooves at a 20 mm offset with the stop square



2. Drill a 6 mm access hole in to the edge using the P-System drill jig



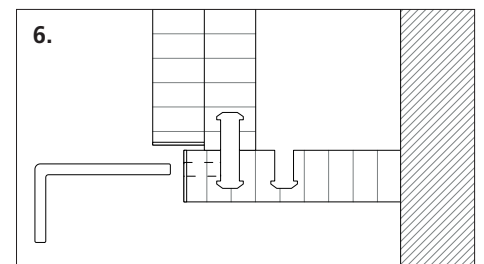
3. Assemble the joint in offset position with a Bisco and mark.



4. Fit the filler until it lines up with the marking



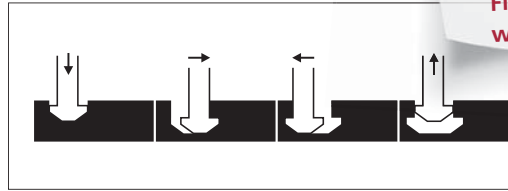
5. Insert Clamex P connector



6. Insert the filler and join with Clamex P

# P-System

Form-locking anchorage  
without tools

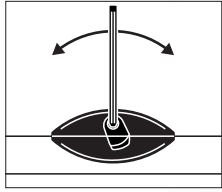


**Tips  tricks**  
Find the right P-System connector  
with the configurator

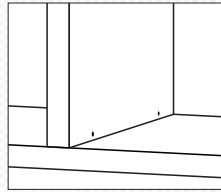


# Clamex P

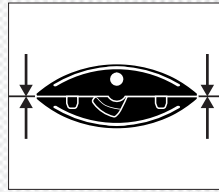
Detachable connecting fitting



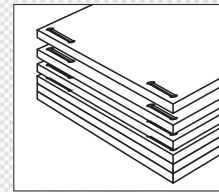
Detachable



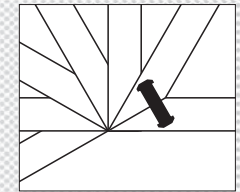
Aesthetic



High clamping  
force



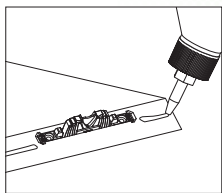
Stackable



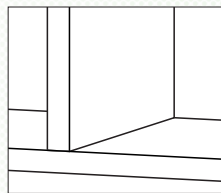
Versatile

# Tenso P

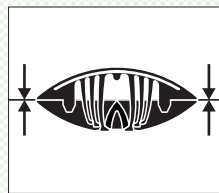
with preload clip, self-clamping fitting as  
glueing aid, for all angles



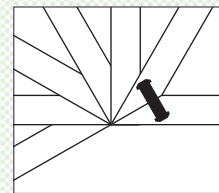
Glueing



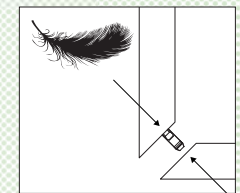
Invisible



High clamping  
force



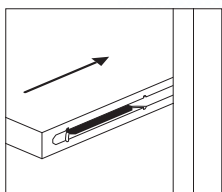
Versatile



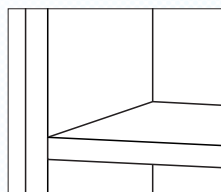
Lower assembly  
force

# Divario P

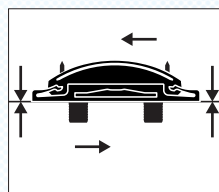
Self-clamping, invisible fitting for slide insertion



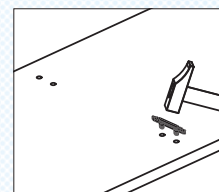
Sliding insertion



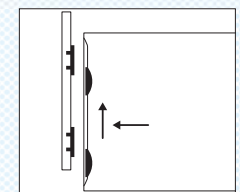
Invisible



Clamped joint



Fast installation



Assemble by sliding



Manufacturer:  
**Lamello AG**  
Joining technology  
Hauptstrasse 149  
CH-4416 Bubendorf  
Tel. +41 61 935 36 36  
Fax +41 61 935 36 06  
info@lamello.com  
www.lamello.com